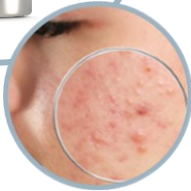




NEW! Purifying Range - Purifier Night

NIMUE PURIFIER NIGHT



- A daily skin clarifying **night** moisturiser for the treatment of problematic skin conditions
- Mattifying, fast absorbing cream.
- Lightweight and suited for the control and management of oily, congested and inflamed problematic skin conditions
- **50ml retail | 15ml sample tube**

TARGET MARKET



- All ages
- Problematic skin classification

GENERAL BENEFITS

- Targets all causes of acne
- Prevents further development of acne and scarring
- Controls and maintains the level of good and bad bacteria on the skin
- Balances the skin microbiome
- Assists in exfoliation
- Decongests the pores and improves skin texture
- Reduces inflammation
- Helps regulate sebaceous activity and breakouts
- Reduces surface oil and mattifies the skin
- Repairs the skin barrier
- Hydrates

INDICATIONS

- Acne prone skin
- Lower grades of active acne
- Breakouts
- Congestion
- Enlarged pores
- Oiliness
- Pustules and pimples

SELLING POINTS



- More benefits on bacteria
- Lightweight and mattifying moisturiser, specifically for night use
- Refines the pores and smoothes the skin
- Based on the latest technologies in Dermabiotics and other key active ingredients, effectively targeting surface sebum, cornification and inflammation



PRE AND POSTBIOTIC PRIMARY INGREDIENTS

- **Postbiotic: Morinda Citrifolia Callus Lysate** - Hacking the microbiome communication system
- **Prebiotic: Inulin and Yogurt Powder** Provides food for “good” bacteria



PM:

- Apply after Nimue Cleanser and Conditioner
- Massage into clean, dry skin

PRIMARY INGREDIENTS

Nicotinamide

- Reduces inflammation in the skin associated with oxidative damage
- Supports wound healing and repairs the barrier function

5% Triple AHA

- Small molecular weight and size resulting in excellent exfoliating and rejuvenation

Encapsulated Retinol

- Retinol accelerates cell renewal and normalises keratinisation

Nicotinamide

